

## History of the Soviet Type-1 watches (1930-1958) version 2.1

Note: This document uses the name "Type-1" for all 4 factories who produced this type of watch although this name was not used by all those factories.

Russia's own watch industry has its origins in buying the machines, including a year assistance from former employees, of the bankrupt Hampden Watch Company. An indept article about this part of the history can be found here: <https://www.hampdenwatches.com/>

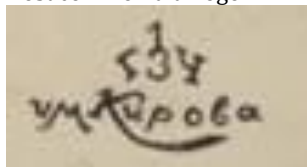
### 1<sup>st</sup> SWF Kirova (845)

Movement markings



1936-38 \* 1938-40 \* 1940-41

Most common dial logo.



Since the start of the 1<sup>st</sup> SWF in 1930 - in 1935 renamed to 1<sup>st</sup> SWF-Kirova and in 1943 to 1<sup>st</sup> MWF - they produced Type-1 watches in both 7 jewel and 15 jewel versions.

The 1<sup>st</sup> SWF Kirova didn't made Type-1 watches anymore after their evacuation to Zlatoust in autumn 1941. So the last 1<sup>st</sup> SWF Type-1 watches have a date stamp 3-41.

If the dial has a logo, the most common is the 1<sup>st</sup> SWF Kirova logo (see sample). Other logos are shown at the end of this document. A number on the dial itself indicates it is a military watch, although sources mention that all watches with a 1 to 24 scale are for the military. Watches with a 1 to 24 scale rarely have a logo on the dial.

During the war years the factory was known as "factory 845".

### Zlatoust (834)

Movement marking



Only from 1951 till 1958

Dial logo



Only from 1951 till 1958

In the 4th quarter 1941 the 1<sup>st</sup> SWF Kirova factory was evacuated to Zlatoust (343 - Zlatoust Watch Factory).

The Zlatoust Watch Factory continued producing Type-1 watches. Between 4-41 and 1951 no dial logo or movement marking was used at all.

In 1951 the Zlatoust Watch Factory used a movement marking for the first time. The latest known year marking is 3-58.

On post war movements you can find a marking "ChK-6" on the movement.

During the war years the factory was known as "factory 834".

## 2<sup>nd</sup> WF (853)

Movement stamps



1936 only

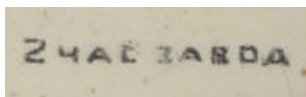


1936-37 \* 1938-39 \* 1940-41



1943-45

A dial logo. Other logos at the bottom of this document.



The 2<sup>nd</sup> WF started fully producing Type-1 watches in 1936. Before 1936 the 2<sup>nd</sup> WF produced Type-1 watches using parts made in the 1<sup>st</sup> SWF (including their movement stamp).

In the 4<sup>th</sup> quarter 1941, most of the equipment of the 2<sup>nd</sup> WF was moved to Chistopol, where they produced Type-1 watches for approximately a year. Those watches have no logo, nor a year stamp (also see Chistopol).

In 1942 a part of the equipment was send back to Moscow to restart the 2<sup>nd</sup> WF factory again. Watches produced between July 1943 and, as far as we know, till 1-1946 are marked with "53" (see sample), which is a reference to the factory number 853.

The Type-1 equipment used by the 2<sup>nd</sup> WF probably went back to Chistopol again after they stopped producing those watches.

During the war years the factory was known as "factory 853".

## Chistopol (835)

Movement marking



Only used from 1947 till 1958

Dial logo



Late 1941 equipment of the 2<sup>nd</sup> WF was evacuated to Chistopol. In Spring the factory started producing watches. Those watches have no logo, nor a year stamp.

In 1942 a part of the equipment was send back to Moscow, where the 2<sup>nd</sup> WF started producing watches again. After the 2<sup>nd</sup> WF stopped producing Type-1 watches, the equipment went back to Chistopol (also see 2<sup>nd</sup> WF).

At first we see Type-1 watches only with a jewel and year mark exactly like those of the 2<sup>nd</sup> WF. As of 1947 the Chistopol logo was added. The last Type-1 watches were produced in 1958.

During the war years the factory was known as "factory 835".

### Type-1 samples:



The one with the rare black dial is known as “paratrooper”, probably made in the 2<sup>nd</sup> WF. In the middle a military Type-1 from the 1<sup>st</sup>SWF-Kirova with (hardly visible) a serial number on the dial. On the right side a watch from the 2<sup>nd</sup> WF.

### Movement Type-1:





**Left:** 1<sup>st</sup> SWF (Kirova) or Zlatoust factory movement.

Metal top on balance with face-up screws. Plain wheels. Palet fork bridge has two screws. Sometimes you see dark coloured plain wheels. Probably only used during the Zlatoust years in WW2.

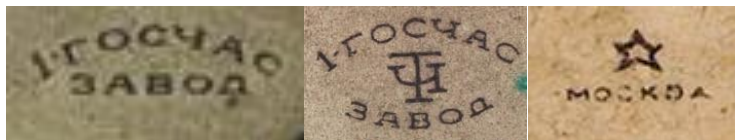
**Right:** 2<sup>nd</sup> WF (853) or Chistopol factory movement.

Brass top on balance with face-down screws. Excavated wheels. Palet fork bridge has one screw.

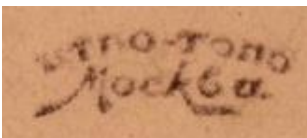
Note: there has been a lot of discussion about the plain and excavated wheels and which factory they are originally from. Most watch parts are interchangeable and who knows if factories supplied each other in times of scarcity. Also, a watch maker had the opportunity to use parts from different factories.

## Logo samples

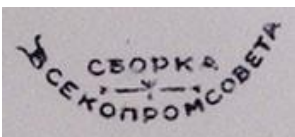
### 1<sup>st</sup> SWF (Kirova)



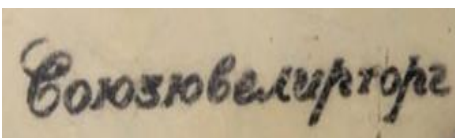
Early logos



Central Department for Commerce and Production



Congress of General Ministry of Industry



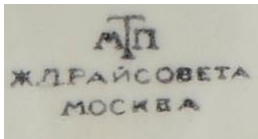
Jewelry Trade Association



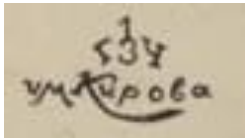
People's Commissariat of Heavy Industry - All-Union Association of Precision Industry.



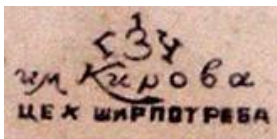
Peoples Commissariat of Timber Industry



Trust of Local Industry of Railway District Soviet

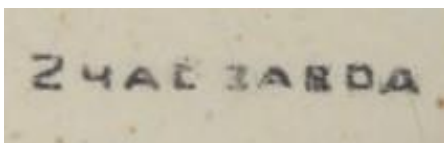


1<sup>st</sup> SWF-Kirova



1<sup>st</sup> SWF-Kirova shop of consumer goods

## 2<sup>nd</sup> WF



Early logo



People's Commissariat of Heavy Industry - All-Union Association of Precision Industry.



Logo with pallet fork and star



## Chistopol



## Zlatoust



Note: These logos look very similar

## Sources:

Ansy.ru:

<http://ansya.ru/health/k-iyulyu-1941-na-aerodromah-v-borispole-kiiev-i-beloj-cerkvi-bi/pg409.html>

History 2<sup>nd</sup>WF:

<http://slava.su/istorija-chasovogo-zavoda-slava-vse-dla-fronta-vse-dla-pobedy.html>

Russian Polytechnical Museum:

<https://polymus.ru/ru/museum/news/chasy-dlya-pobedy-iz-kolleksii-politeha/>

Soviet aircraft industry, year 1942:

<http://www2.warwick.ac.uk/fac/soc/economics/staff/mharrison/aviaprom/ver10/>

WUS thread about factory numbers during WW2:

<http://forums.watchuseek.com/f10/factory-5-factory-53-a-2694410.html>

Logo samples:

<http://www.ussrtime.com/>

[http://www.netgrafik.ch/russian\\_logos.htm](http://www.netgrafik.ch/russian_logos.htm)

Version 1.0: by slls

Version 2.0 : WUS member Straight\_time added new info and a few corrections.