

History of the Type-1 watches (1930-1958) version 1.0

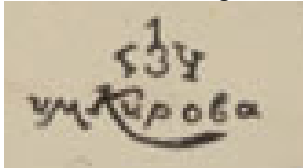
1st SWF Kirova (845)

Movement stamps



1936-38 * 1938-40 * 1940-41

Most common dial logo.



Most 1stSWF dials have no logo.

Since the start of the 1st SWF in 1930 - in 1935 renamed to 1st SWF-Kirova and in 1943 to 1st MWF - they produced Type-1 watches in both 7j and 15j versions.

The 1st MWF didn't made Type-1 watches anymore after their evacuation to Zlatoust in autumn 1941. So the last 1st MWF Kirovskie watches have a date stamp 3-41.

If the dial has a logo, the most common is the 1SWF-Kirova logo (see sample). There are other logos known, but these are rare. A number on the dial itself indicates it is a military watch although sources mention that all watches with a 1 to 24 scale are for the military.

During the war years the factory was known as factory 845.

Zlatoust (834)

Movement stamp



1951-58

Dial logo



In the 4th quarter 1941 the factory was evacuated to Zlatoust (343 - Zlatoust Watch Factory).

The Zlatoust Watch Factory continued producing Type-1 watches. Between 4-41 and 1951 no logo was used at all. In 1951 the Zlatoust Watch Factory used a movement logo for the first time. The latest known movement year stamp was 3-58.

During the war years the factory was known as factory 834.

2nd MWF (853)

Movement stamps

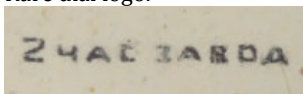


1936-37 * 1938-39 * 1940-41



1943-45

Rare dial logo.



Most 2ndSWF dials have no logo.

The 2nd MWF started fully producing Type-1 watches in 1936. Before 1936 the 2nd MWF produced Type-1 watches using parts made in the 1st SWF (including their movement stamp).

In the 4th quarter 1941, most of the equipment of the 2nd MWF was moved to Chistopol where they produced Type-1 watches for approximately a year. Those watches have no logo, nor a year stamp.

In 1942 the equipment was send back to Moscow to restart the factory again. First as 2nd WF Chistopol and since July 1943 till 1945 as factory 538.

In 1945 Type-1 equipment went back to Chistopol again.

During the war years the factory was known as factory 853.

Chistopol (835)

Movement stamp



1947-58

Dial logo



During approximately 1 year (presumably late 1941 till 1942) Chistopol produced Type-1 using the evacuated equipment of the 2nd MWF. Those watches have no logo, nor a year stamp. In 1942 equipment was sent back to Moscow and came back in 1945 to Chistopol.

At first we see Type-1 watches only with a jewel and year mark exactly like those of the 2nd MWF. As of 1947 the Chistopol logo was added. The last Type-1 watches were produced in 1958.

During the war years the factory was known as factory 835.

Type-1 samples:



The one with the rare black dial is known as “Type-1 paratrooper”.

In the middle a military Type-1 from the 1SWF-Kirova with (hardly visible) a serial number on the dial.

On the right side a Type-1 from the 2nd MWF

Movement Type-1:





Left: 1st SWF or Zlatoust factory movement.

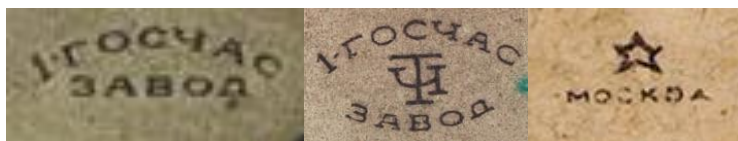
Metal top on balance with face-up screws. Plain wheels. Palet fork bridge has two screws. Sometimes you see dark coloured plain wheels. Probably only used during the Zlatoust years in WW2.

Right: 2nd SWF, 853 or Chistopol factory movement.

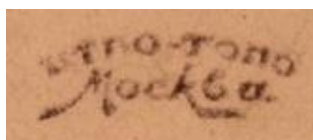
Brass top on balance with face-down screws. Excavated wheels. Palet fork bridge has one screw.

Logo samples

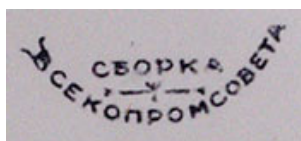
1st SWF



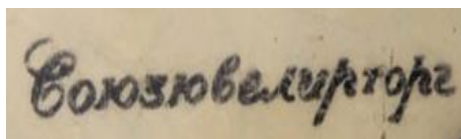
Early logos



Central Department for Commerce and Production



Congress of General Ministry of Industry



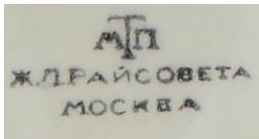
Jewelry Trade Association



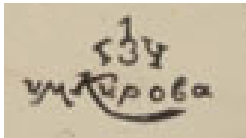
People's Commissariat of Heavy Industry - All-Union Association of Precision Industry.



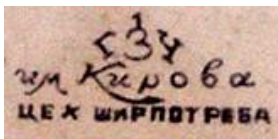
Peoples Commissariat of Timber Industry



Trust of Local Industry of Railway District Soviet

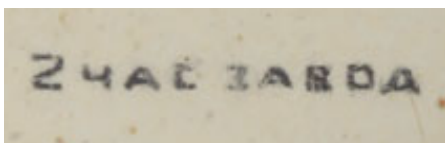


1st SWF-Kirova

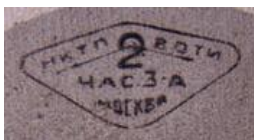


1st SWF-Kirova shop of consumer goods

2nd SWF



Early logo



People's Commissariat of Heavy Industry - All-Union Association of Precision Industry.



Possibly also used by the 1st SWF-Kirov

Chistopol



Zlatoust



Sources:

Ansy.ru:

<http://ansya.ru/health/k-iyulyu-1941-na-aerodromah-v-borispole-kiev-i-beloj-cerkvi-bi/pg-409.html>

History 2nd MWF:

<http://slava.su/istorija-chasovogo-zavoda-slava-vse-dla-fronta-vse-dla-pobedy.html>

Russian Polytechnical Museum:

<https://polymus.ru/ru/museum/news/chasy-dlya-pobedy-iz-kollektsii-politeha/>

Soviet aircraft industry, year 1942:

<http://www2.warwick.ac.uk/fac/soc/economics/staff/mharrison/aviaprom/ver10/>

WUS thread about factory numbers during WW2:

<http://forums.watchuseek.com/f10/factory-5-factory-53-a-2694410.html>

Logo samples:

<http://www.ussrtime.com/>

http://www.netgrafik.ch/russian_logos.htm