

Spotting a Redial

With the rising popularity of vintage Omega watches, a lot of people requested information on how to spot the right vintage watches and avoid the bad ones. Follow this checklist and never be fooled again.

The Logo Font

Check if the font of the Omega text is sharp, straight and period correct. Use the reference number to check dials of similar watches.

STEP 01



STEP 02

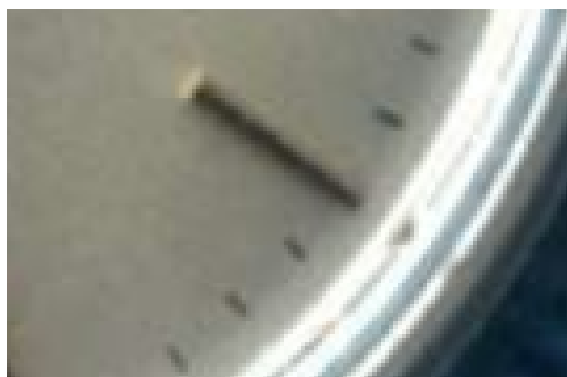
The Model Font

Omega used different fonts for their models in different time periods. Take a look for example at the cursive (50s) Geneve and the straight (60s) Geneve text or the Seamaster with "coathanger" (50s/early 60s) and round S (60s).

The Indices

If both fonts look period and model correct, you can check the indices. Are they evenly distributed and are they the same size? See the uneven distance here? ->

STEP 03



STEP 04

Overall Dial Quality

Take another good look at the dial. Is there anything that seems "off"? Once you see more dials and get more experienced you'll get a "sixth sense" when looking at dials. When in doubt ask someone you know or on omegaforums.com

Buy The Seller

This one is always important. If you found a watch and you are still unsure if it's original, consult with the seller. A good seller should communicate if a watch has been redialed.

STEP 05

